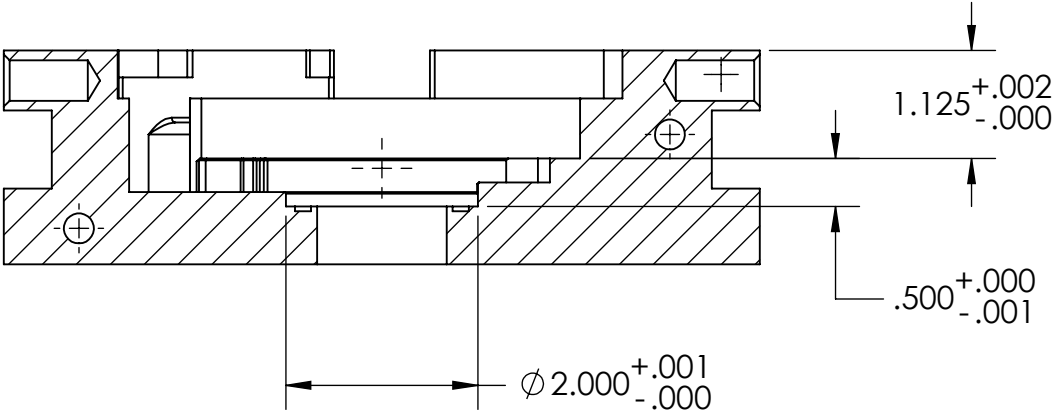
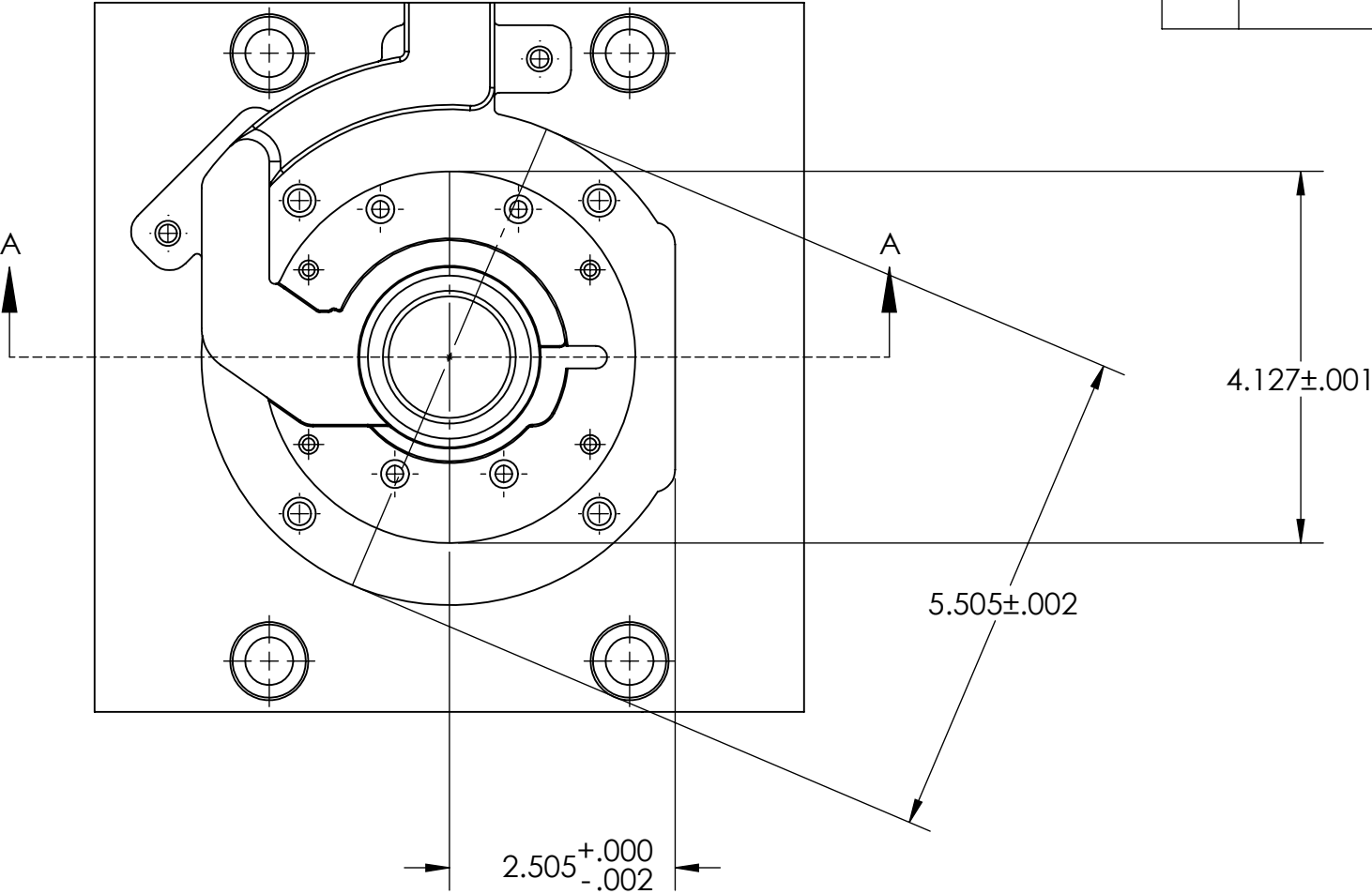


REV	DATE	DESCRIPTION	BY
A	3/24/2016	INITIAL RELEASE	YT



SECTION A-A

THE INFORMATION CONTAINED IN THIS DRAWING IS THE SOLE PROPERTY OF POLYSHOT AND SHOULD NOT BE USED BY OTHER PARTIES WITHOUT WRITTEN AUTHORIZATION FROM POLYSHOT INC.

CONFIDENTIAL

UNLESS OTHERWISE SPECIFIED, DIMS. ARE IN INCHES AND TOLERANCES ARE:

.XX +/- .01" ANGLES +/- .05°
.XXX +/- .001"
.XXXX +/- .0005"

JOB NUMBER: M11 SNVG Machining			
CUSTOMER NAME: Polyshot			
PROJECT DESCRIPTION: TOP CLAMP PLATE - tolerance Sheet1			
POLYSHOT <small>75 Lucien Gordon Drive • West Henrieville, NY 14386 P: (855) 295-6884 • F: (855) 295-6815 www.polysht.com</small>			
ENGINEER: YT	APPROVAL SIGNATURE:	REV.: A	CREATION DATE: 3/24/2016
SCALE: 1:2	FILENAME: Top Clamp Plate M20	SHT. SIZE: A	SHEET NO.: 1 OF 1